

"Window on the Ossipee Mountains"  
A project of the Ossipee Conservation Commission  
Town of Ossipee  
P. O. Box 67  
Center Ossipee, NH 03814-0067

FOR RELEASE April 3, 2008

Contact: Elizabeth Gillette 603 539 4742

Landmark Ossipee Mountains View Protected on Route 16

The Ossipee Conservation Commission is pleased to announce it has successfully completed the purchase of the "Window on the Ossipee Mountains" property on NH Route 16 for conservation open space. Purchase of the 26.6-acre site for \$250,000 follows a 15-month fundraising drive to protect a scenic view of the Ossipees, valuable wildlife habitat and underlying aquifer.

"Many wonderful people helped to protect this special property," said Elizabeth Gillette, Chair of the Ossipee Conservation Commission, "and the Commission wishes to thank every individual, business and non-profit foundation and organization that has supported the project." A scenic overlook and nature trail are planned for permanent public access and conservation education.

The property is to remain conservation open space in perpetuity as a result of a conservation easement acquired by The Dan Hole Pond Watershed Trust, an Ossipee-based land trust, with funds raised for the project. The lot is bordered by conservation lands, so its purchase extends the green corridor of protected land on Route 16. It will be managed for the town of Ossipee by the Conservation Commission.

Funds to buy the property included over \$130,000 in individual donations plus \$60,000 in Conservation Commission funds, \$18,000 from The Dan Hole Pond Watershed Trust, a \$15,000 New Hampshire Charitable Foundation grant, an \$8,000 grant from The Little Family Foundation, an \$8,000 grant from the Fields Pond Foundation, and over \$8,000 donated by the local business community including \$5,000 from Pike Industries. The Green Mountain Conservation Group, the Ossipee Lake Alliance and the Greater Ossipee Area Chamber of Commerce also helped promote and raise funds for the project. A \$1,500 grant from the New England Grassroots Environment Fund enabled initial fundraising to begin in May 2007.

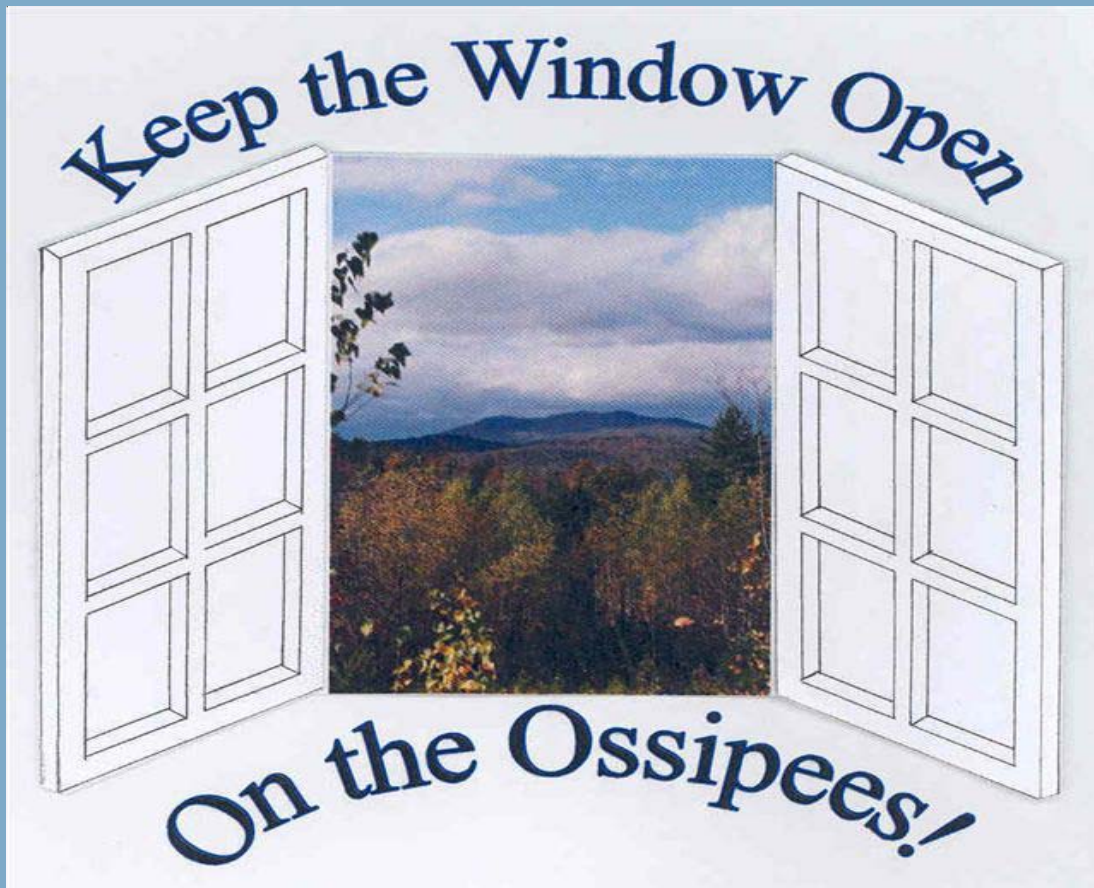
"Private donations, especially in recent weeks as we neared our goal, have been extraordinarily generous, and we are very grateful to these donors," Gillette said. To meet the seller's April 1 deadline the Commission advanced additional conservation funds it expects to recover as outstanding



## KEEP THE WINDOW OPEN ON THE OSSIPEES!

The Window on the Ossipee Mountains is an Ossipee Conservation Commission project to protect an outstanding view along NH Route 16.

The project is to buy and manage as open space 26.6 acres of land located 1.8 miles north of NH Route 28 just south of Boulder Farm on the west side of NH Route 16. The project will:



- **Protect** the view of the Ossipee Mountains — a world-famous Ring Dike geologic complex;
- **Reclaim** valuable open, brushy wildlife habitat that supports NH Highest Quality Wildlife Habitat;
- **Create** a roadside pull-off and nature trail for rest and relaxation. Maps and signs will explain the geologic history of the Ossipees, a history of the town, and show access routes to nearby points of interest and services.



**Local Project, Big Benefits** Besides protecting the scenic view and habitat for wildlife, the scenic pull-off will encourage NH Route 16 travelers who might otherwise by-pass Ossipee to stop and enjoy the view, learn about the area and nearby attractions.

**How Do Wildlife Benefit?** The lot is bordered by existing conservation lands, so its purchase will extend a key roadside green corridor. It is “supporting landscape” to nearby NH Highest Quality Wildlife Habitat (Fish & Game NH Wildlife Action Plan 2006).

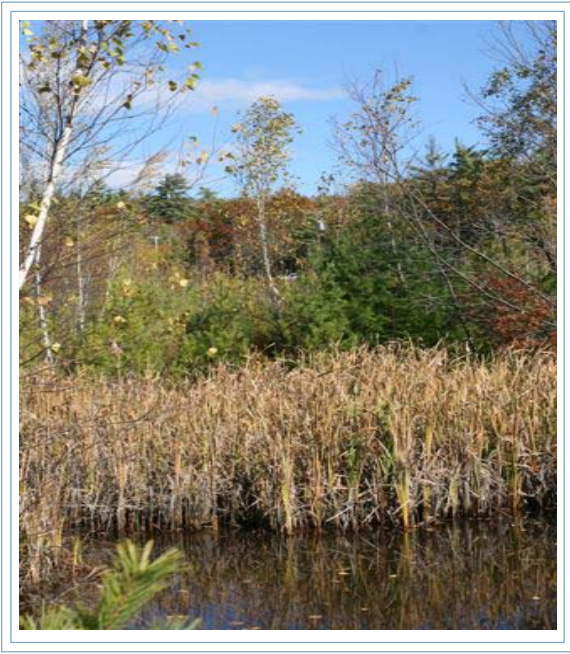
**Where’s the View?** The Ossipee Mountains were largely out of public view from NH Route 16 until 25 years ago when this site was cleared for a golf driving range. Today nature has largely reclaimed the site as shrubs and grasses. The site will be maintained as open space for view protection.

**Meets Community Priorities** Over 90 percent of Ossipee residents favor scenic roads and public open space (Master Plan survey). Scenic view protection is recommended by the Ossipee Master Plan (2006) and the NH Route 16 Corridor Protection Study (1999). A roadside pull-off adds opportunities for rest, recreation and promoting area-wide points of interest.

**You can help!** You can help protect this beautiful view of the Ossipee Mountains. Over \$225,000 in donations and grants must be raised in addition to Ossipee Conservation Commission funds already committed for the project.

**Pledge your donation today!** The Ossipee Conservation Commission is now accepting pledges that will be payable in December 2007. We will send you a reminder in the Fall when your pledge will be due. All contributions will be tax-deductible.

Don’t wait — Act today to keep the Window open on the Ossipees. Contact the Ossipee Conservation Commission, P O Box 67, Center Ossipee, NH 03814 for details. Or call 603 539 4181 for more information.



“Besides shrubs and grasses the Window” property includes wetlands.”

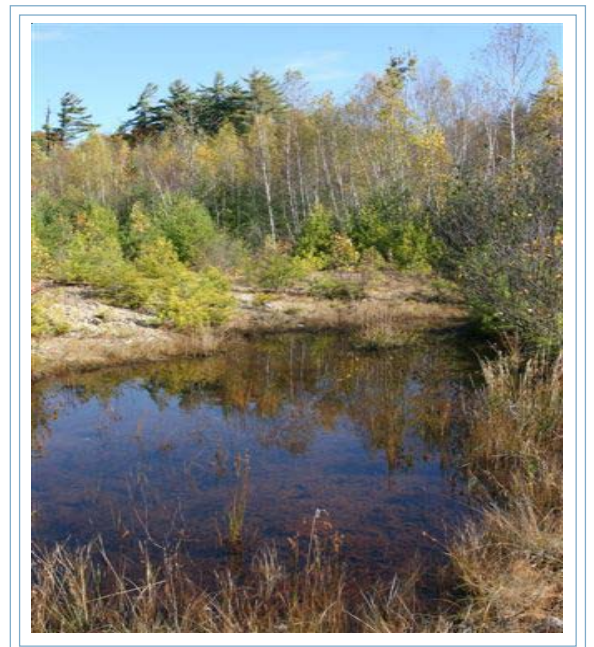
Brushy areas that support a variety of wildlife shown by tracks of wild turkey.



Brushy areas that support a variety of wildlife shown by tracks of deer (with coin for scale).



“Besides shrubs and grasses the Window” property includes wetlands.”



## A BRIEF HISTORY OF THE OSSIPEE MOUNTAINS

The rugged Ossipee Mountains we see today are the subsurface remains of a magma chamber that lay about 4 miles beneath the land surface and fed a massive volcano. This volcano formed about 120 million years ago. As molten rock and gasses were extruded, the magma chamber began to empty and lose pressure. Eventually the weight of the overlying rock caused the chamber to collapse and volcanic rock in the conduits to the surface, which had already begun to crystallize, caved into the chamber. Other magma still in the chamber cooled more slowly and formed granite.

Fractures in the rock surrounding the chamber allowed the volcanic rock and granite to subside and deeper magma to flow upward into the fractures forming a wall-like ring dike that nearly completely surrounds the lower slopes of the mountains and varies in width from 100 yards to nearly one mile. Millions of years of erosion have exposed this complex.

The Ossipee Mountains are world famous among geologists for the near completeness of the ring dike and their unusual composition of about one half a fine grained volcanic rock and one half a coarse grained granite.

**With success, the Window project will protect the finest view of the Ossipees from NH Route 16 for generations to come. Thank you for your interest and for your support toward this conservation effort!**

The Ossipee Mountains circular geologic complex shows clearly in this Google image; the stick pin marks the "Window" property.

